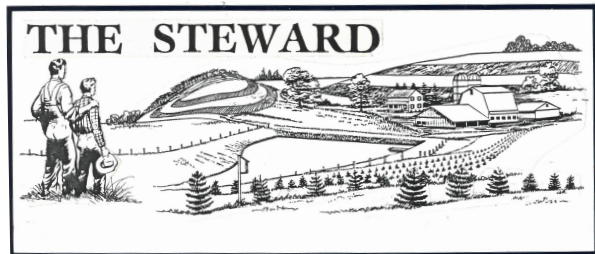


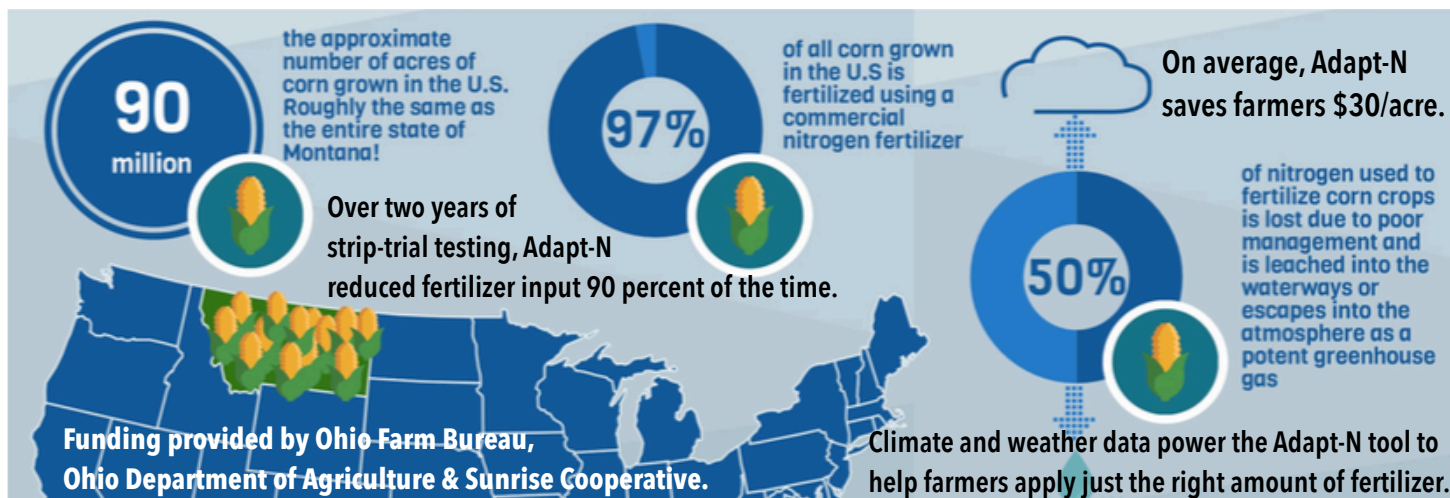


# Ashland

## Soil & Water Conservation District



### Crop and Nutrient Modeling Resources Available



Farmers want to make the right nutrient management choices, but it's sometimes hard to know what the right choice is. Crop and nutrient models allow farmers to explore different management choices and their impact to help make decisions that are right for their operation—all without having to wait an entire crop season for results.

Ashland SWCD is partnering with industry leaders to put new, high-tech modeling tools into the hands of farmers in 2020, including On-Field Ohio!, Adapt-N and Field Forecasting Tool.

**On-Field Ohio!** estimates erosion and phosphorus runoff risk on each field. Producers see how management practices affect phosphorus runoff by comparing how management changes. This tool is free to all Ashland County producers.

**Adapt-N** manages nitrogen by identifying what is actually available to the crop. It utilizes research from Cornell University on how nitrogen moves through soil over time based on factors such as nitrogen sources, soil characteristics, field management and weather data.

**Field Forecasting Tool** uses detailed management data to determine the best timing, rate and ROI for nutrient application. This tool uses soil tests, long-term weather forecasts, potential yield, growing degree days, tissue tests, etc. to determine impact to both yield and ROI.

A Water Quality Initiative Grant from Ohio Farm Bureau and support from Sunrise Cooperative will cover 100 percent of the modeling costs on 500 acres of Adapt-N and FFT in the Jerome Fork Watershed. **The application deadline for Adapt-N and Field Forecasting Tool cost share is March 1. Applications are available at ashlandswcd.com**

## WHAT'S COMING UP

### Ashland SWCD Office Closed:

- December 24: Christmas Eve at Noon
- December 25: Christmas Day
- January 1: New Years Day
- January 20: Martin Luther King, Jr. Day
- February 17: President's Day

### Board Meetings (at SWCD office)

- January 14 at 9 a.m.
- February 11 at 9 a.m.
- March 10 at 9 a.m.

### Lang Creek Watershed Meeting

January 23 at 1 p.m. at Maple Grove Church

### Tree Sale Order Deadline: March 30

Order online at [www.ashlandswcd.com](http://www.ashlandswcd.com)

### Tree Sale Pickup

- Sunday, April 19 from 2-5 p.m.
- Monday, April 20 from 8-6 p.m.

# Lang Creek Watershed Planning Needs Your Input

You don't have to look far to find water quality in the headlines. From news stories on Lake Erie's infamous algal blooms to the dead zone in the Gulf of Mexico, water quality impacts everyone.

Here in Ashland County, we play a vital — if often ignored role — in both of these headline stories. Ashland County is uniquely situated at the headwaters, or the start, of both the Lake Erie and Mississippi watersheds. That means what we do here has big implications downstream.

That's why the Ohio Department of Agriculture awarded Ashland SWCD a grant to target improving the water quality of the Jerome Fork of the Mohican River. One key to doing that is watershed planning, one small watershed at a time, and that will be the focus of a meeting on January 23 at Maple Grove Church, 960 Township Rd 964, Ashland, Ohio 44805.

The meeting will focus on identifying projects and critical areas in the Lang Creek watershed and working with the community to prioritize projects, practices and partners to improve water quality on a local level.

It's important to understand this is not a stream or a river clean up project — it's about identifying and prioritizing needs on a watershed scale. To do that, we first have to identify what a watershed is and what it is not.

A watershed is a land area that channels rainfall and snowmelt to creeks, streams and rivers — and then

eventually to outflow points such as reservoirs, lakes, bays or the ocean. So even though water is a key part of a watershed, the watershed is actually the land area, not the water body.

The first step in this process is a community effort to identify activities and practices taking place on the land that impact our water quality. Once those potential sources are identified, we can work to prioritize practices and projects that will improve the quality and health of our waterways.

The Jerome Fork is a natural corridor through the center of our county. Nearly half of the county's land actually drains into the Jerome Fork, including our urban population center; the city of Ashland. And, the Lang Creek sub watershed includes over 20 percent of the Jerome Fork's footprint.

This watershed encompasses part of Clear Creek, Orange, Milton, and Montgomery townships including the city of Ashland. The state has identified this watershed as the most impaired and most vulnerable of the smaller watersheds in the Jerome Fork.

Not only do we as community members enjoy our county's natural resources and waters, but our water resources - including the Jerome Fork - are a huge economic engine in our county, drawing visitors from across the state and country to our county where their tourism dollars are invested into our local businesses.

That's why it's so important that our community members and businesses participate in these community planning meetings. If we fail to protect and preserve our county's water quality and resources, the impact will not only be felt by our communities and residents, but it will also have a devastating impact on our tourism economy.



**Community members gathered at Brethren Care Village for the second Lang Creek Watershed planning meeting and Chamber of Commerce Ag Community Breakfast. Those in attendance shared valuable input about the watershed and heard from the Ohio EPA and District Technician Erica White.**



## Many Volunteer Opportunities Available



We need your help! Ashland SWCD is looking for community members to help us with the following projects:

- **Hazel Willis Woods**

Volunteers are needed to maintain the trails, loop road, the spring, water bars and the main driveway.

- **Office Help**

We always need help preparing and mailing flyers and newsletters promoting SWCD programs and events.

- **Tree-Mendous Volunteer Day**

On April 18, we need volunteers to help with our tree sale. Trees will be brought in bulk from a Michigan nursery, and volunteers will help dip the roots, bag trees, label species, and sort orders from pick up. Each volunteer will receive a free tree and community service hours. This is a great opportunity for groups and organizations. Individuals also welcome!

- **Precipitation Monitors**

Ashland SWCD has taken the lead in recruiting precipitation monitors for the Community Collaborative Rain, Hail, Snow Network. If you are interested becoming a monitor, stop in the office at 1763 State Route 60S and purchase an official rain gauge for \$32.25. Maxine will help you learn to report rainfall and snowfall to CoRoRaHs.

**If you or your organization is interested in becoming a volunteer, call the office at 419-281-7645.**



## Bring Soil and Water Education to a Classroom Near You

Ashland SWCD has many educational and hands-on activities available for all age groups. Administrative Assistant Maxine Swaisgood has visited over 13 classrooms this fall and is looking for new classrooms to visit this spring.

Available programs include **Drop Around the World**, **Freddie the Polluted Fish**, **Soil Core**, **What's Wild**, **Native Animal Pelts**, **Soil Snack**, **Tree-mendous Trees**, **Enviroscape model**, **Drawing on Nature**, and **Can Do**.

If you would like to schedule a classroom visit, call Maxine at 419-281-7645.

## FREE TREES!

\* Sign up to receive our newsletter electronically by March 1 and be entered to win a free pack of tree seedlings of your choice! [www.ashlandswcd.com](http://www.ashlandswcd.com)

\* All volunteers at our Tree-mendous Volunteer Day receive a free seedling!



Scouting & Forestry participants from Boy Scout Troop 521.

**Ashland Soil & Water Conservation District**  
1763 State Route 60  
Ashland OH 44805

**NON PROFIT ORG  
U.S. POSTAGE  
PAID  
PERMIT # 87  
Ashland OH**

## Winter Manure Application Not Recommended

Ashland SWCD never recommends applying manure to frozen or snow-covered ground. However, sometimes life on the farm throws unexpected curves, and application may be necessary to prevent manure storage overflow. If that happens on your operation this winter, you should only spread enough manure to prevent storage overflow until soil conditions improve. Follow these guidelines, but know that even by following them, you are ultimately still responsible in manure enters waters of the state:

- Application is limited to 10 wet tons/acre for solid manure more than 50 percent moisture and 5 wet tons for manure less than 50 percent moisture.
- Applications should be made on land with at least 90 percent surface residue. That's a great reason to plant cover crops!
- Manure can not be applied on more than 20 contiguous acres.
- Application must be setback to a minimum of 200 feet from all surface water.



- Application rates cannot exceed those specified in Table 4 page 33 of the NRCS Conservation Standard code 590, Nutrient Management.

Remember to soil test every 3 years and have manure sampled for accurate nutrient application. Ashland SWCD offers manure analysis and soil tests. If you show Ashland SWCD up-to-date manure application records, you will receive one free manure analysis. Call District Technician Erica White at 419-289-4828 for more information regarding manure application questions.

**Web:** [ashlandswcd.com](http://ashlandswcd.com)  
**Facebook:** [facebook.com/AshlandSWCD](https://facebook.com/AshlandSWCD)  
**Blog:** [ashlandswcd.com/new-blog](http://ashlandswcd.com/new-blog)

**Ashland Soil & Water Conservation District**  
1763 State Route 60  
Ashland OH 44805  
419-281-7645